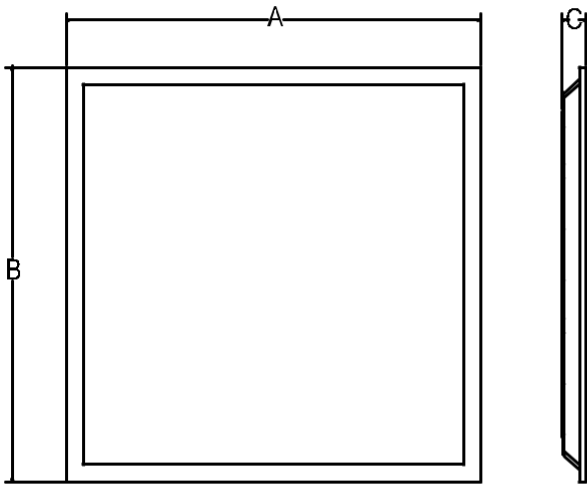


SPECIFICATION

Back-lit LED Panel Light



Maximum overall	A	B	C
2*2ft	603mm	603mm	30mm
2*4ft	1213mm	603mm	30mm



FEATURES

Input voltage: AC100-277V

Operating frequency: 50/60Hz

Power factor: > 0.95

Ambient temperature range: -20°C ~+45°C

Color Temp: 3000-5000K

Dimmable: 3-in-1 dimming

THD: ≤10%

IP Rating: IP40

CRI: >Ra80

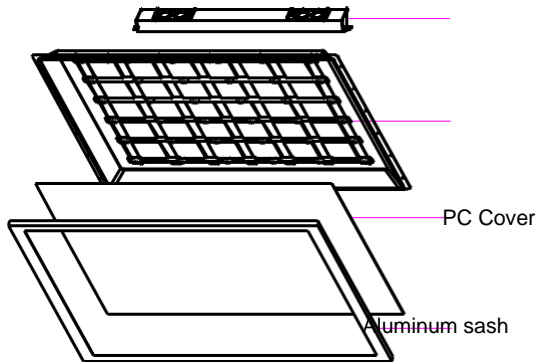
Beam angle: 120°

- Housing material:6063-T5
- 5 years' Limited warranty

PARAMETER

Length	Product code	Certification	CRI	Wattage	Description		3000-5000K	Packing/carton	G.W./carton
					Function				
2*2FT	WSL-PNL-ZBL-2*2-40W	ETL/cETLus,DLC,	>80	40W	3-in-1 dimming(0-10V;PWM;Rx)		AC100-277V	650*250*650mm 6 pieces 1*40HQ Loading=3672pcs	15kg
2*4FT	WSL-PNL-ZBL-2*4-49W	ETL/cETLus,DLC	>80	49W	3-in-1 dimming(0-10V;PWM;Rx)		AC100-277V	1260*250*650mm 6 pieces 1*40HQ Loading=1944pcs	26kg
2*4FT	WSL-PNL-ZBL-2*4-72W	ETL/cETLus,DLC	>80	72W	3-in-1 dimming(0-10V;PWM;Rx)		AC100-277V	1260*250*650mm 6 pieces 1*40HQ Loading=1944pcs	26kg

MOUNTING GUIDES

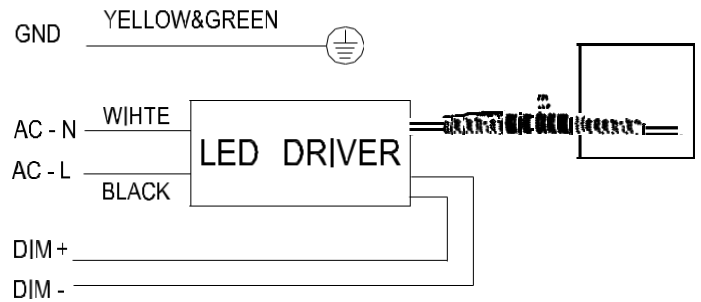


LED Driver

LED Chip

PC Cover

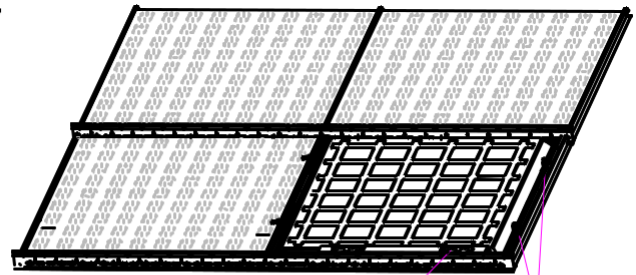
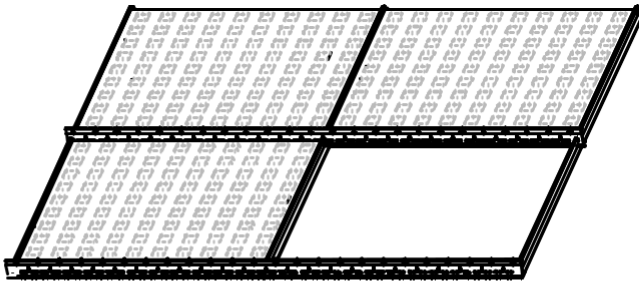
Aluminum sash



INSTALLATION INSTRUCTION

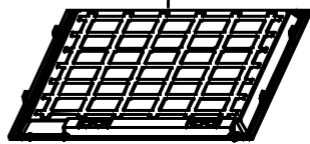
Step1

Step2

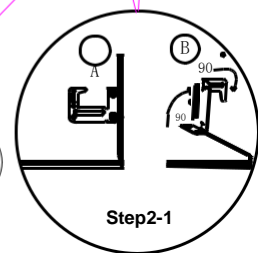
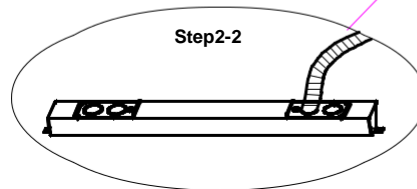


Step1-1

Step1-2



Step2-2



Step2-1

Step 1: Make sure of all the power is off before installing. Remove the one ceiling tile that you need to install light fixture on. Then place the light fixture on the T-bar carefully and make sure it is correctly in place and secure.

Step 2: Lift the 4 buckles on the back of the panel up by 90° then bend the top part of the buckles 90° towards the direction where you can anchor the light fixture to the T-bar.

Step 3: Place the driver on top of the lighting fixture in the back. Connect the cable between the driver and the lighting fixture. Open the driver's junction box and connect the AC wire to the driver correctly (L=black & N=white)

Warning:

Ensure the power supply has been cut off before connecting the wire, and all wiring and installation of this product are required to be operated by professionals.