



TECHNICAL DATA SHEET

1. General information		  			
SKU#:	WSL-CL-12in-12W				
Barcode#:	858727007242				
Fixture Type:	12"LED 2-Ring Decorative Ceiling Fixture				
Product Description:	12"LED 2-Ring Decorative Ceiling Fixture, Steel base with white powder coating, Two rings with brush satin nickel finish White diffused acrylic lens 5000k,120V dimmable				
Size:	φ 12 " *H3 "				
Input Voltage:	120V,60Hz				
Input current:	0.1A				
Rated Power Input:	12W				
Ra:	Ra≥80				
Rated R9:	10				
CCT:	5000K				
Total Light Output:	800LM or 67LM/W				
life hour:	35000h				
Dimmable:	Yes				
Certificate:	ETL	EXTERNAL VIEW			
IP Rated:	IP23	DIMENSION VIEW			
THD:		<20%			
Operating temperature		14-113 F			
Housing IP rating		Damp			
Range of application:	Residence indoor (Like Living Room, Bed Room, Corridor etc.)				
Body color:	Steel Base with white powder coating , Tow Ring (Satin Nickel Finishing)				
Body material:	Steel				
Lens color:	White				
Lens material:	PMMA+Diffuse				
2. Package information					
Inner box size :	13.4x4.3x13.6 in	Inner Box Materials:	A3B	Qty/inner box :	1/1pcs
Master box size :	18.1x14x14.4 in	Master Box Materials:	A=BdoubleWall Five Layer Strength Paper	Qty/master box :	1/4pcs
CBM:	0.06 m ³	Qty/Pakage:	1/4pcs	Qty of 40FCL :	3866 pcs

Remarks:

- 1.This fixture meet the American installation standard.
- 2.The color temperture is optional,can meet the different color temperture base on different application.
- 3.The color of body is optional,can be powder coated and plating,color can be white,black,ORB or NS.

Specifications

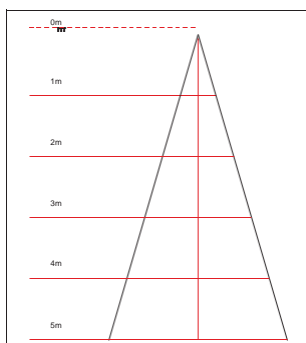
Model#	WSL-CL-14in-27w
Description	14"LED Round Puff Light,Double Ring
Power	27W
Voltage Input	120Vac,60HZ
Lumen output	2100lm
CCT	2700K,3000K, 4000K, 5000K
CRI	Ra>80
Housing	Finish Steel base
Application	Indoor Only
Driver	UL certified
Lens	PS
Operating Temp.	-25°C~ 40°C
IP Rating	IP20
Certificates	ETL/cETL,Energy Star
warranty	3 years Limited Warranty
Dimmable	(100%-10 %) Dimmable
Product Dimension	14"DIA x3.9" H (356 x 356 x 100 mm)



Order Information

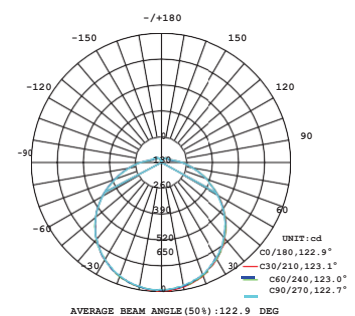
Item Number	Description	Power	Voltage Input	Driver	CCT	Lumen Output	Certificates
WSL-CL-14in-27w	14" Double Ring Ceiling Light	27W	120Vac	UL Certified	2700K, 3000K 4000K, 5000K	2100lm	ETL/cETL , Energy Star

Lux Chart



Height	Average Lux (lx)	Light range (dia.)
1M	143.8	367.6cm
2M	36.0	735.2cm
3M	16.0	1102.8cm
4M	9.0	1470.4cm
5M	5.8	1837.9cm

Photometrics



Address:527 N. Polk Street, Pineville NC 28134

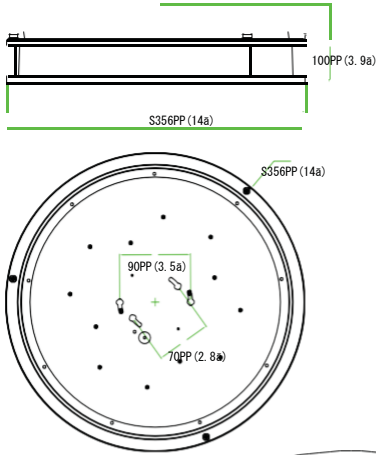
Phone: 1-704 835 1054

Email: rpatel@smartlednc.com

apatel@smartlednc.com



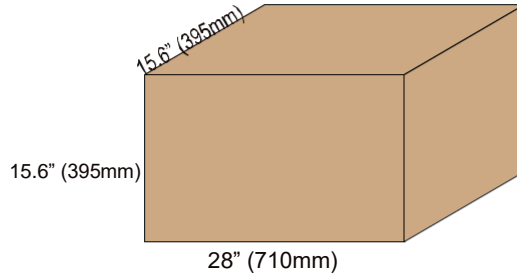
Product Size



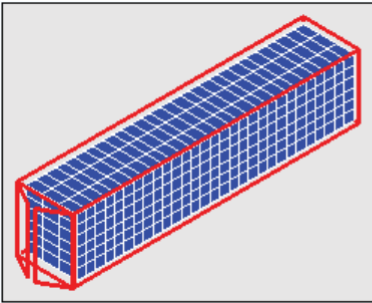
Packaging

6pcs/CTN G.W.:10.2 kg

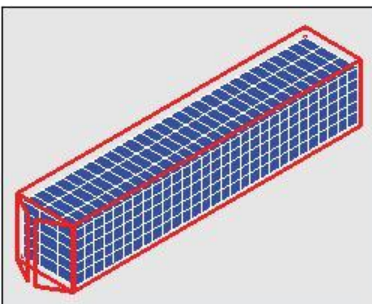
Dimension: 28"L x 15.6"W x 15.6"H (710mm X 395mm X 395mm)



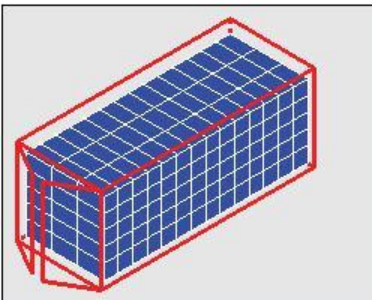
Container Loading QTY



Size	Corton QTY	Product QTY	Volumn	G.W.
40'hq	522 ctn	3132 pcs	61.65m ³	5324 kg



Size	Corton QTY	Product QTY	Volumn	G.W.
40'gp	435 ctn	2610 pcs	51.37 m ³	4437 kg



Size	Corton QTY	Product QTY	Volumn	G.W.
20'gp	210 ctn	1260 pcs	24.8 m ³	2142 kg



LM79
LM80



Specifications

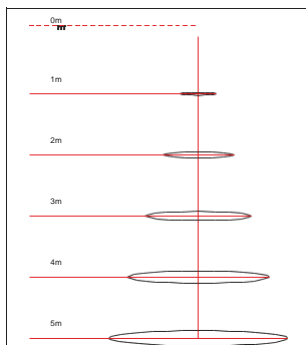
Model#	WSL-CL-16in-35w
Description	16"LED Round Puff Light,Double Ring
Power	35W
Voltage Input	120Vac,60HZ
Lumen output	2600lm
CCT	2700K, 3000K,4000K, 5000K
CRI	Ra>80
Housing	Finish Steel base
Application	Indoor Only
Driver	UL certified
Lens	PS
Operating Temp.	-25°C~ 40°C
IP Rating	IP20
Certificates	ETL/cETL,Energy Star
warranty	3 years Limited
Dimmable	(100%-10 %) Dimmable
Product Dimension	16"DIA x3.9" H (401 x 401 x 100 mm)



Order Information

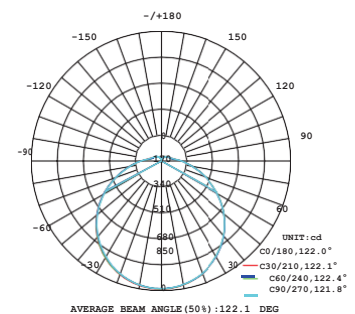
Item Number	Description	Power	Voltage Input	Driver	CCT	Lumen Output	Certificates
WSL-CL-16in-35w	16" Double Ring Ceiling Light	35W	120Vac	UL Certified	2700K, 3000K 4000K, 5000K	2600lm	ETL/cETL , Energy Star

Lux Chart

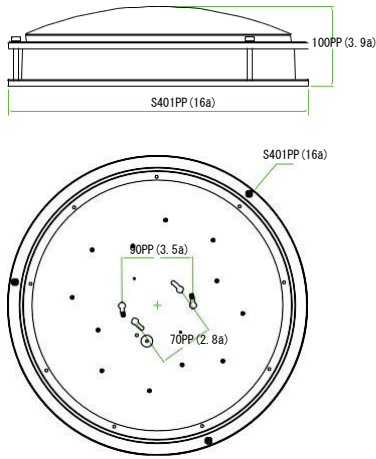


Height	Average Lux (lx)	Light range (dia.)
1M	185.8	361.6cm
2M	46.5	723.1cm
3M	20.7	1084.7cm
4M	11.6	1446.2cm
5M	7.4	1807.8cm

Photometrics



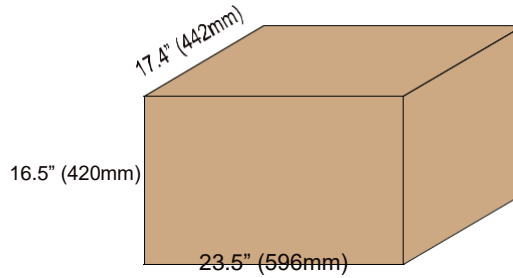
Product Size



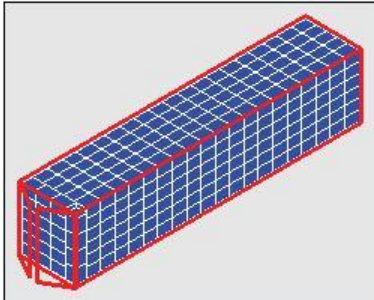
Packaging

5pcs/CTN G.W.:10 kg

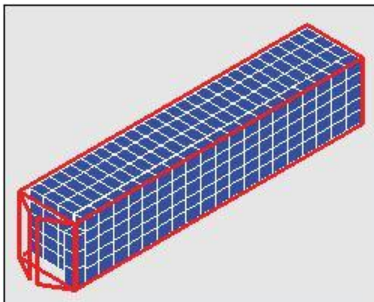
Dimension: 23.5"L x 17.4"W x 16.5"H (596mm X 442mm X 420mm)



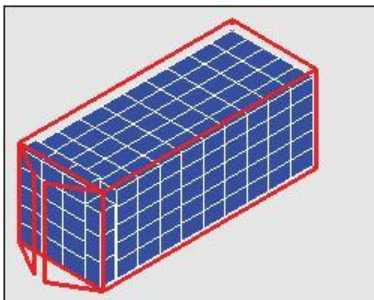
Container Loading QTY



Size	Corton QTY	Product QTY	Volumn	G.W.
40'hq	592 ctn	2960 pcs	69.73m ³	5920 kg



Size	Corton QTY	Product QTY	Volumn	G.W.
40'gp	503 ctn	2515 pcs	59.24 m ³	5030 kg



Size	Corton QTY	Product QTY	Volumn	G.W.
20'gp	243 ctn	1215 pcs	28.62 m ³	2430 kg